

AXIS Camera Station S1032 Recorder

Out-of-the box ready server for high-definition surveillance



- > Ease of installation
- > Pre-configured
- > Optimized hardware
- > High-definition surveillance
- > AXIS Camera Station included
- > Extensive support

AXIS Camera Station S1032 Recorder is an out-of-the box ready rack server optimized for reliable high-definition surveillance. AXIS S1032 is pre-loaded with all the necessary software and pre-configured to minimize installation time. Completed with cameras, a desktop terminal and monitors, it forms a plug and play solution for mid-sized installations where active surveillance is needed.

AXIS S1032 is designed for quick installation in server rooms. The recorder is pre-loaded with AXIS Camera Station video management software, 32-channel licenses and other necessary system software.

System settings such as camera and storage configurations are pre-configured to further simplify system setup and maximize performance. Hardware components and storage capacity are optimized to meet the demands for reliable high-definition surveillance.

To further safeguard system uptime the server has redundant hard disks and power supplies. The package includes three-year hardware and software support.

AXIS Camera Station offers an intuitive user interface providing all the necessary features for effective surveillance such as flexible live-view layout, site maps, powerful event configuration, efficient alarm management and responsive PTZ control.

Intuitive timeline visualization and an efficient video search enable quick investigation and retrieval of evidence for safe and secure export.

AXIS S1032 can be completed with AXIS Camera Station S9001 Desktop Terminal with multiple monitor support for optimal system overview.



AXIS S9001 Desktop Terminal sold separately

Technical Specifications - AXIS Camera Station S1032 Recorder

Network Video Recorder - Rack Server

Models	AXIS Camera Station S1032 Recorder Version: 1
Number of channels	32 Channels included, can be upgraded up to 48 channels (sold separately)
Processor	Intel® Xeon® E5-2407 v2, 2.40GHz, 10MB Cache
Memory	2 x 4GB (8192MB) Memory type: RDIMM, 1333 MHz, Low Volt, Single Rank, x8 Data Width
Storage	4 x 3TB (9TB usable space after RAID), 7200rpm HDD with 128MB cache and SATA 6Gb/s interface, RAID 5, Hot Plug RAID Controller: PERC H710, 512MB NV Cache
Graphic card	Matrox 200 eR
Optical Disk Drive	OEM DVD RW
Operating System	Microsoft Windows Professional Embedded 7
Network Card	On-Board Broadcom 5720 Dual Port Gigabit NIC
Remote Management	iDrac 7 Express
System Performance Specification	
Live Video streams	Not intended for local viewing of video.
Recording	Qualified for recording up to 48 video channels with a total recording rate up to 192 Mbit per second.

AXIS Camera Station - Video Management Software

Software	Axis Camera Station 4.x
Languages	All major languages
Video	
Audio	One-way audio streaming, AAC, G.711, G.726 compression
Video compression	H.264 (MPEG-4 Part 10/AVC), Motion JPEG
Live view	
Map function	Yes
PTZ Control	Yes
Playback	
Smart Search for recordings	Yes
Playback	Up to 64x or frame by frame Up to 25 cameras synchronized playback
Export	Manual and scheduled export, Single images in JPEG format, Video in ASF format, Digital signature on exported recordings, Standalone player

General

Compatible Products	Axis network cameras and encoders including HD, standard resolution, high resolution, Pan Tilt Zoom and thermal cameras with firmware 4.30 or later
Power	Dual, Hot-plug, Redundant Power Supply, 350 W
Connectors	4 x USB 2.0, 2 x VGA, Serial port (DB9), 2 x Ethernet (RJ45), 2 x Power inlet
Operating conditions	10 °C to 35 °C (50 °F to 95 °F)
Dimensions	43 x 483 x 607 mm (1.69 x 19.0 x 23.9 in), 1U Chassis
Weight	13.6 kg (30.0 lb)
Approvals	EN/IEC/UL 60950-1, CSA C22.2 No. 60950-1, EN 62311, EN 55022, CISPR 22, EN 55024, CISPR 24, EN/IEC 61000-3-2, EN/IEC 61000-3-3, EN 50581, IEC60664-1
Hardware warranty	3-years included

Accessories

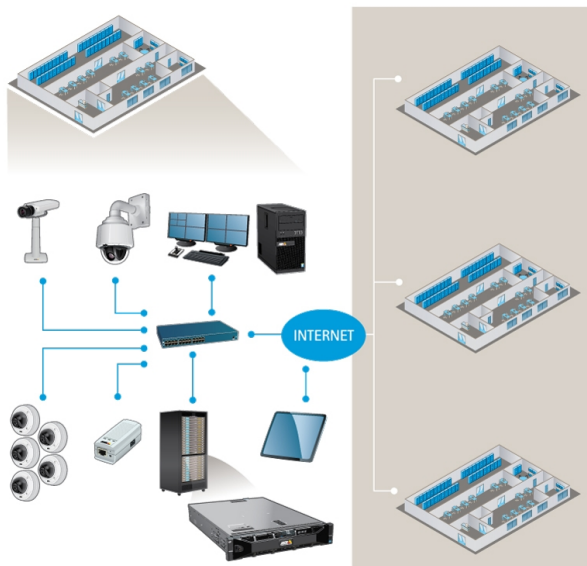
Included accessories	Installation guide, Keyboard (International/US), Computer mouse, Power cable
System accessories	AXIS T8310 Video Surveillance Control Board, AXIS P8221 I/O Audio Module, AXIS A1001 Network Door Controller, AXIS Camera Station S9001 Desktop Terminal

Triggers and events

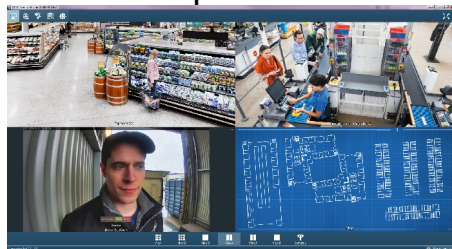
Event triggers	Events triggered by video motion detection, Active Tampering Alarm, AXIS Cross Line Detection, External I/O, Action button, System triggers and device event triggers
Scheduled recording	Schedule per camera for continuous recording or customization of weekday and weekend recordings
Alarm manager	Yes
Microsoft Active Directory support	Yes, multiple user access levels with password protection using local or Windows domain users (Active directory)

More information is available at: www.axis.com/products/cam_station_software

System setup with AXIS S1032 and AXIS S9001



Live view example



Playback example

